

MALE

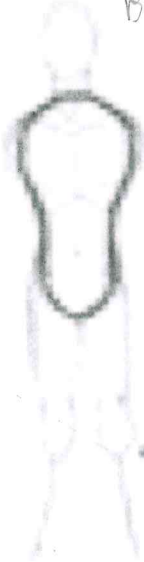
mia

Baccy



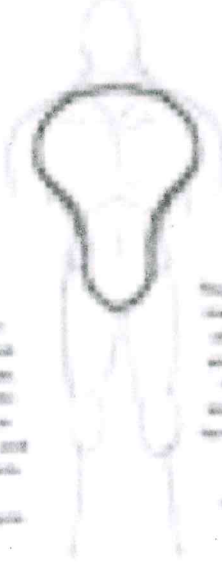
The torso is narrow and elongated, with a small chest and a long, thin waist.

Thin, like a reed.



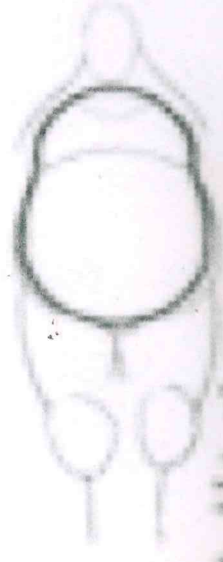
The chest is slightly wider than the waist, with a small belly and a thin waist.

Thin, like a reed.



The chest is broad and the belly is rounded, with a thin waist.

Thin, like a reed.



The chest is very broad and the belly is very large, with a thin waist.

MALE - angular

Use another way to describe the male body which resembles the shape of a triangle, with the chest wider than the waist and the legs wider than the hips.

The chest is wide and the waist is narrow, with a small belly and a thin waist.

mia

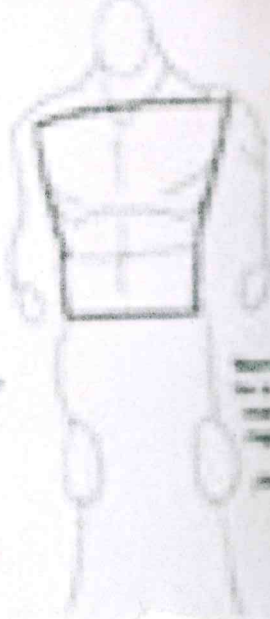
Baccy



The chest is wide and the waist is narrow, with a small belly and a thin waist.



Thin, like a reed.



The chest is wide and the waist is narrow, with a small belly and a thin waist.

